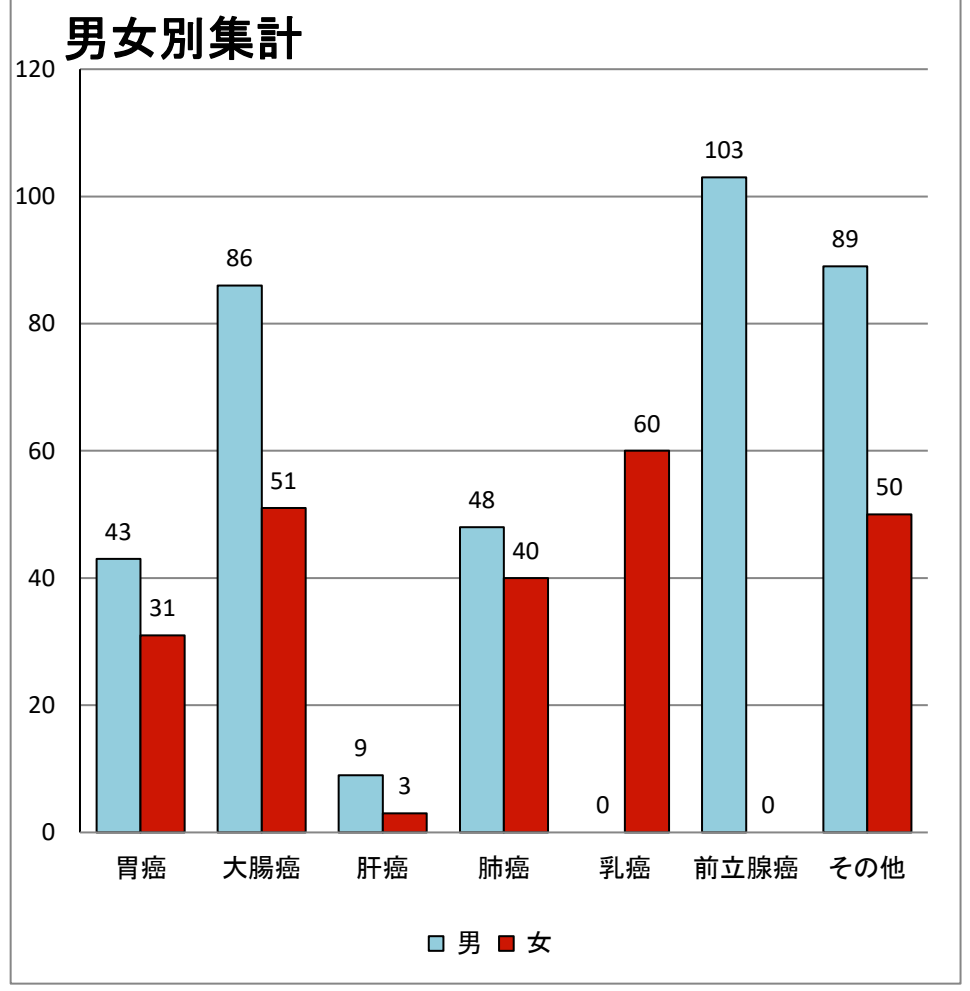
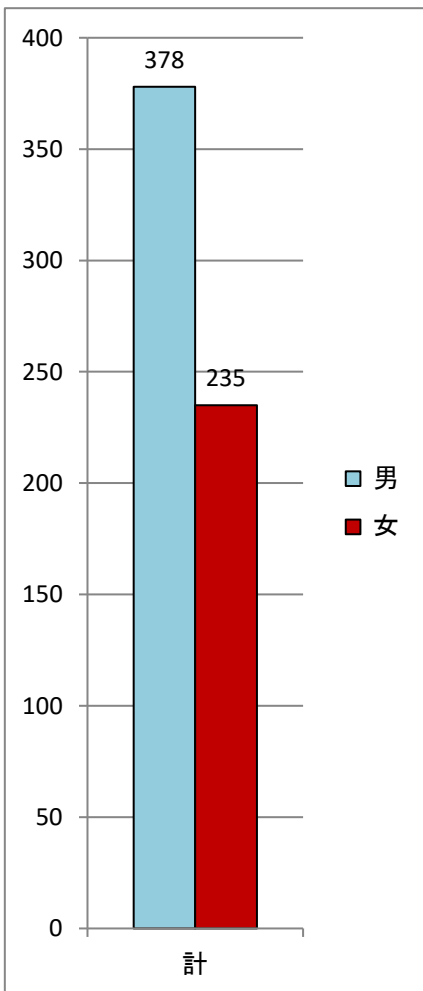
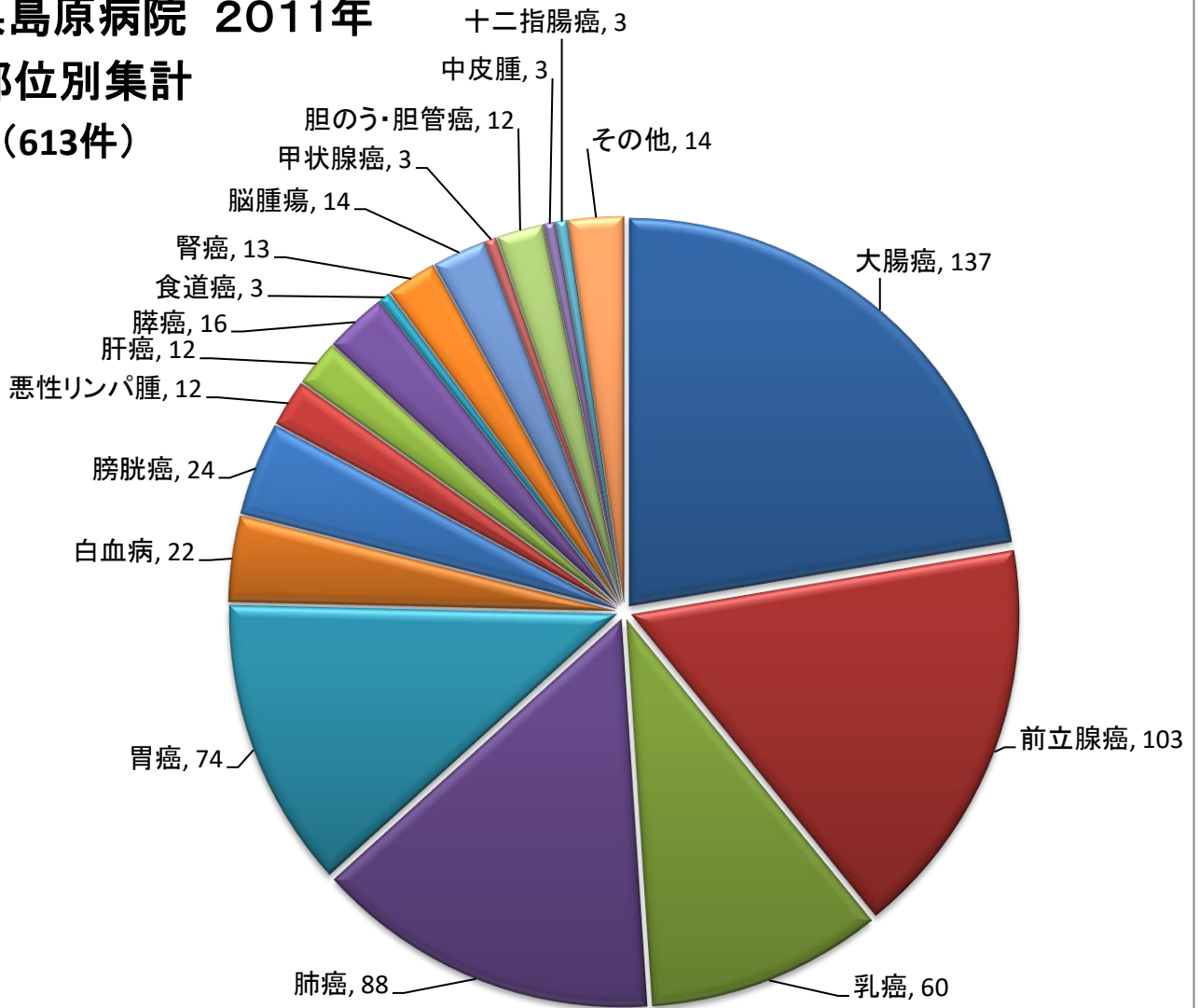
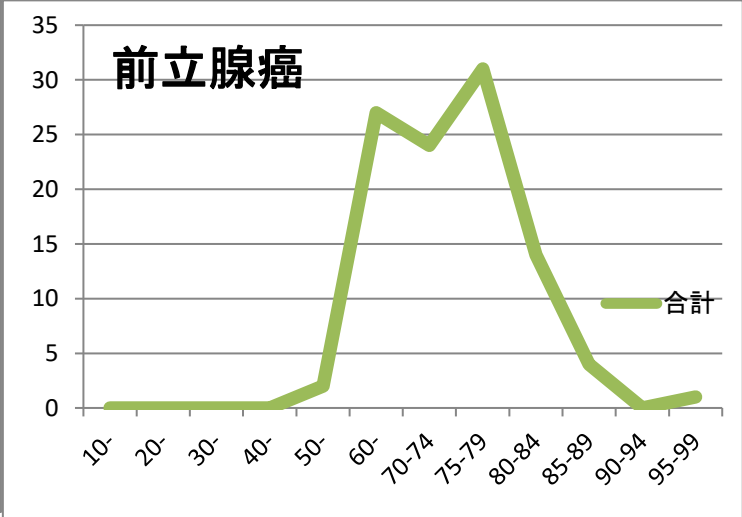
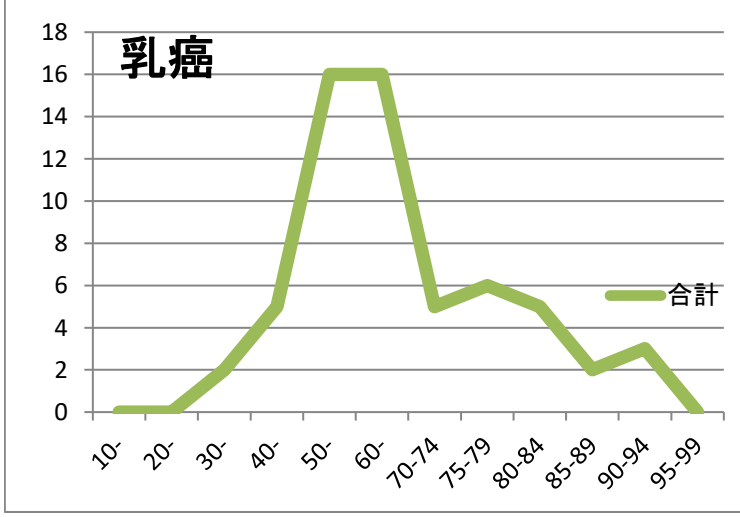
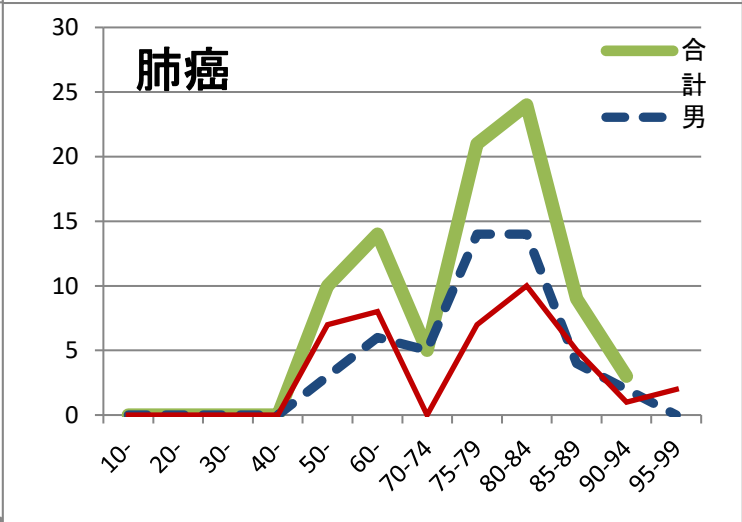
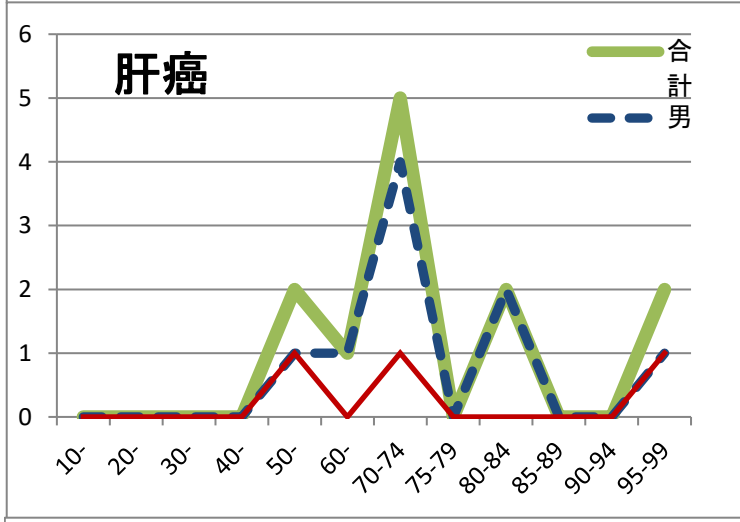
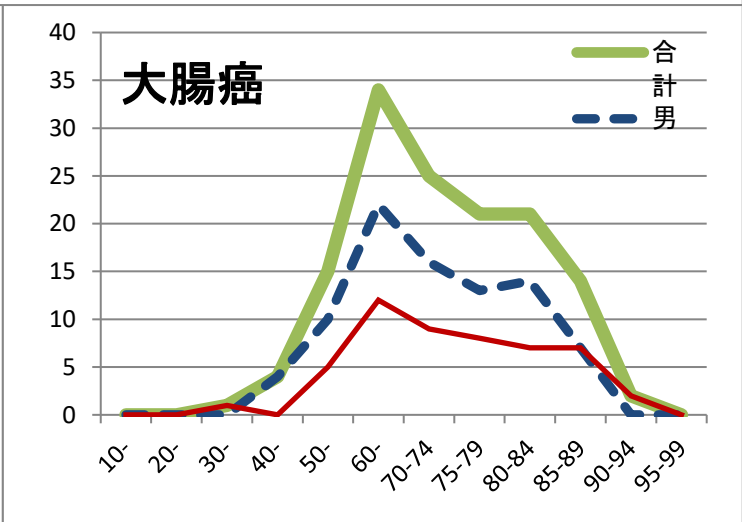
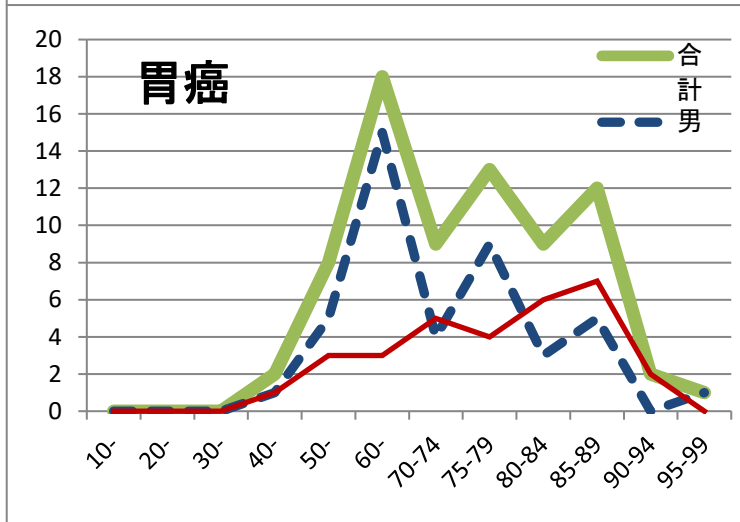
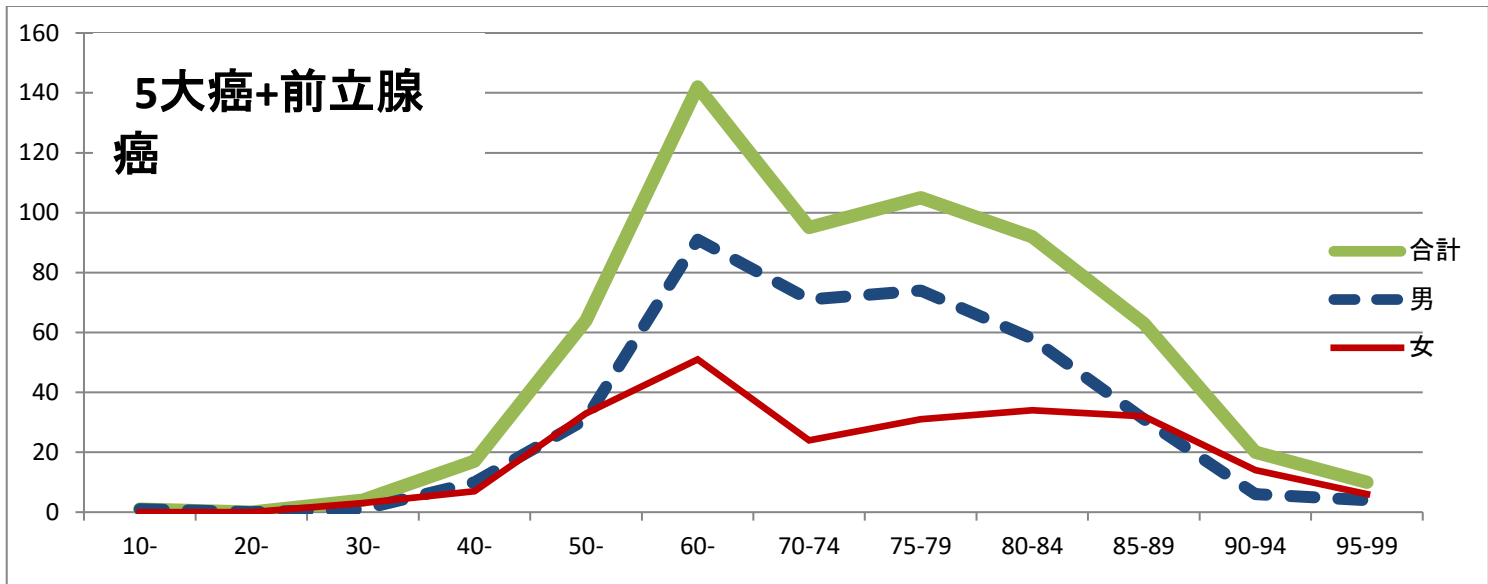


長崎県島原病院 2011年

部位別集計

(613件)





性別集計表
抽出条件：2011年診断抽出条件

		胃癌	大腸癌	肝臓癌	肺癌	乳癌	前立腺癌	その他	合計
男	10-	0	0	0	0	0	0	1	1
	20-	0	0	0	0	0	0	0	0
	30-	0	0	0	0	0	0	1	1
	40-	1	4	0	0	0	0	5	10
	50-	5	10	1	3	0	2	10	31
	60-	15	22	1	6	0	27	20	91
	70-74	4	16	4	5	0	24	18	71
	75-79	9	13	0	14	0	31	7	74
	80-84	3	14	2	14	0	14	11	58
	85-89	5	7	0	4	0	4	11	31
	90-94	0	0	0	2	0	0	4	6
95-99	1	0	1	0	0	1	1	4	
男合計		43	86	9	48	0	103	89	378
女	10-	0	0	0	0	0	0	0	0
	20-	0	0	0	0	0	0	0	0
	30-	0	1	0	0	2	0	0	3
	40-	1	0	0	0	5	0	1	7
	50-	3	5	1	7	16	0	1	33
	60-	3	12	0	8	16	0	12	51
	70-74	5	9	1	0	5	0	4	24
	75-79	4	8	0	7	6	0	6	31
	80-84	6	7	0	10	5	0	6	34
	85-89	7	7	0	5	2	0	11	32
	90-94	2	2	0	1	3	0	6	14
95-99	0	0	1	2	0	0	3	6	
女合計		31	51	3	40	60	0	50	235
合計	10-	0	0	0	0	0	0	1	1
	20-	0	0	0	0	0	0	0	0
	30-	0	1	0	0	2	0	1	4
	40-	2	4	0	0	5	0	6	17
	50-	8	15	2	10	16	2	11	64
	60-	18	34	1	14	16	27	32	142
	70-74	9	25	5	5	5	24	22	95
	75-79	13	21	0	21	6	31	13	105
	80-84	9	21	2	24	5	14	17	92
	85-89	12	14	0	9	2	4	22	63
	90-94	2	2	0	3	3	0	10	20
95-99	1	0	2	2	0	1	4	10	
合計		74	137	12	88	60	103	139	613