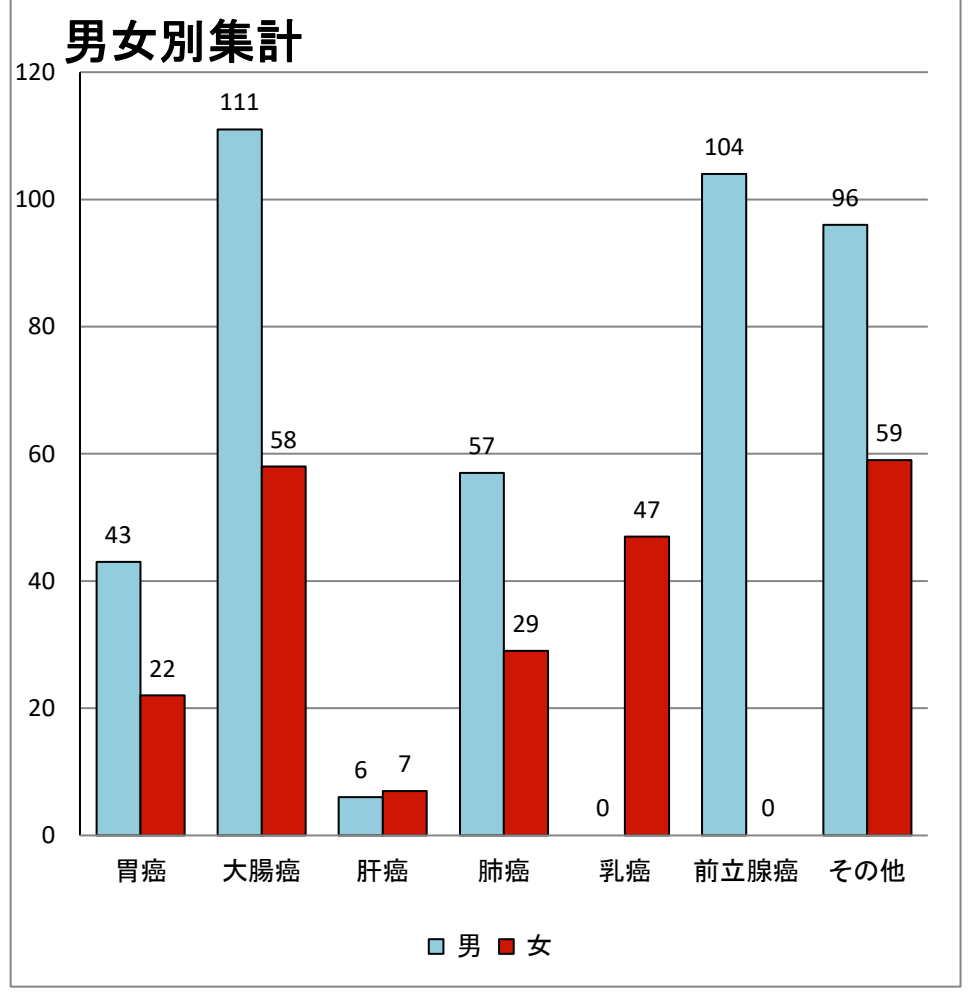
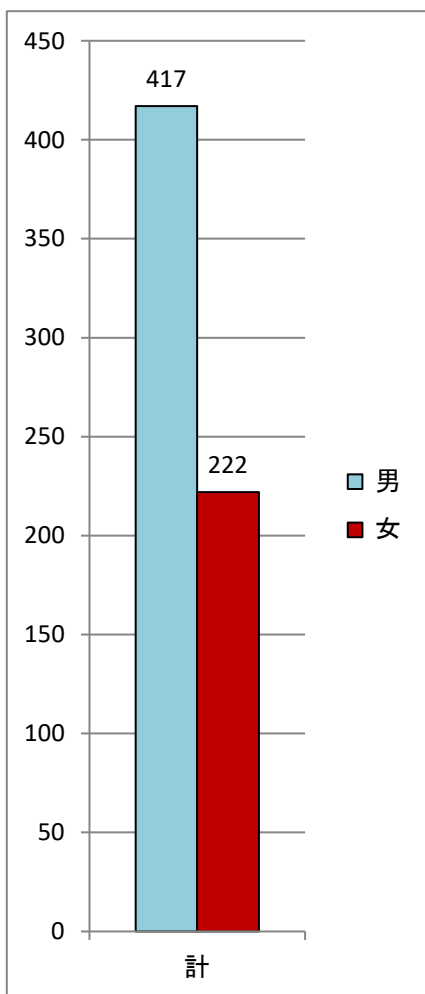
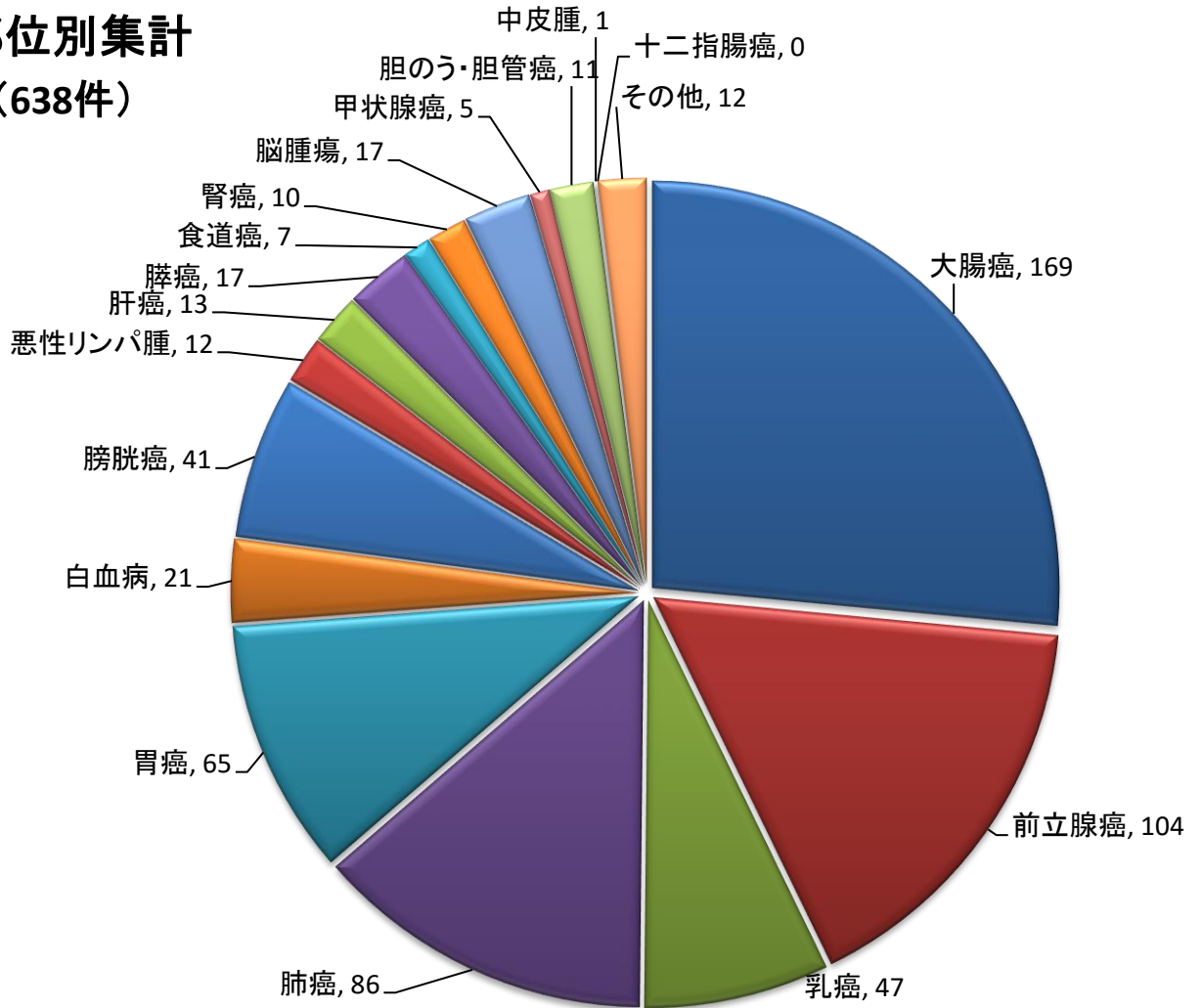
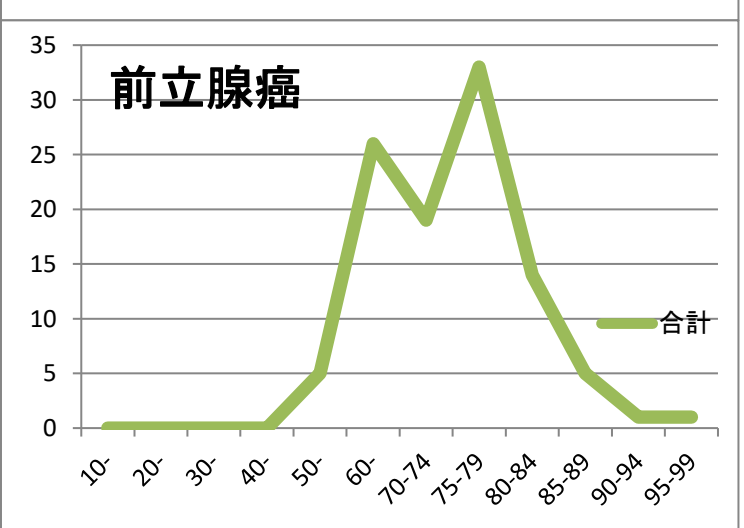
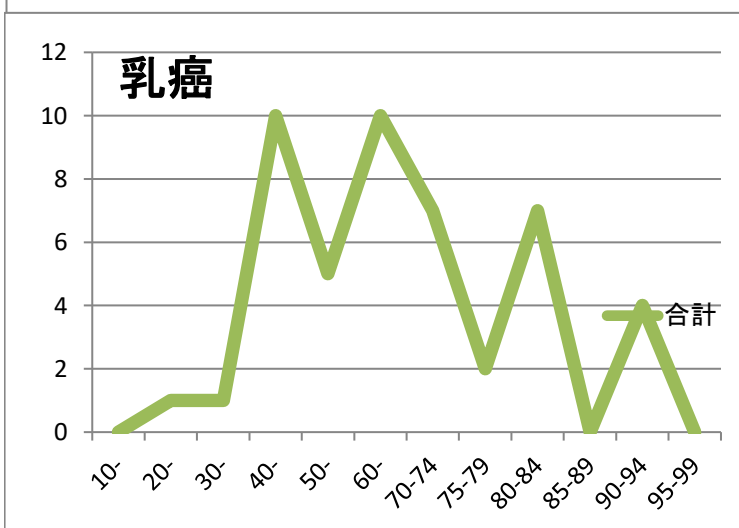
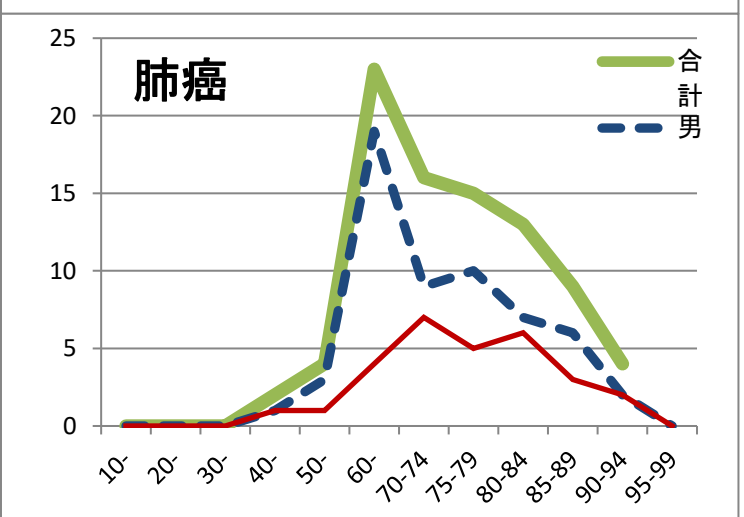
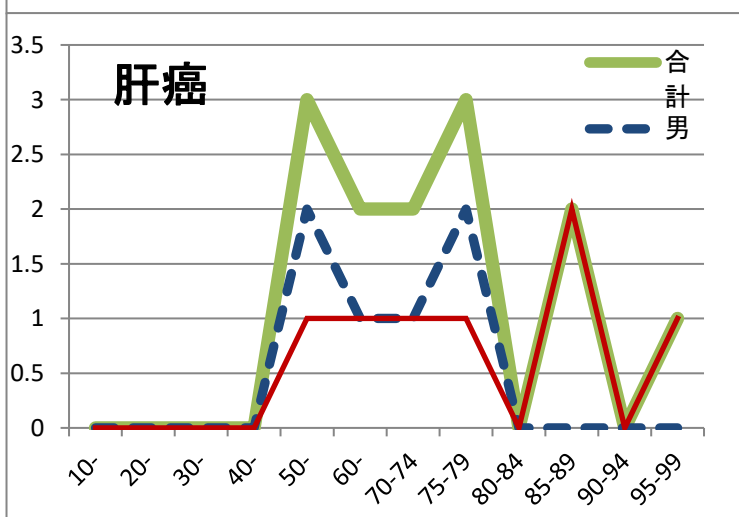
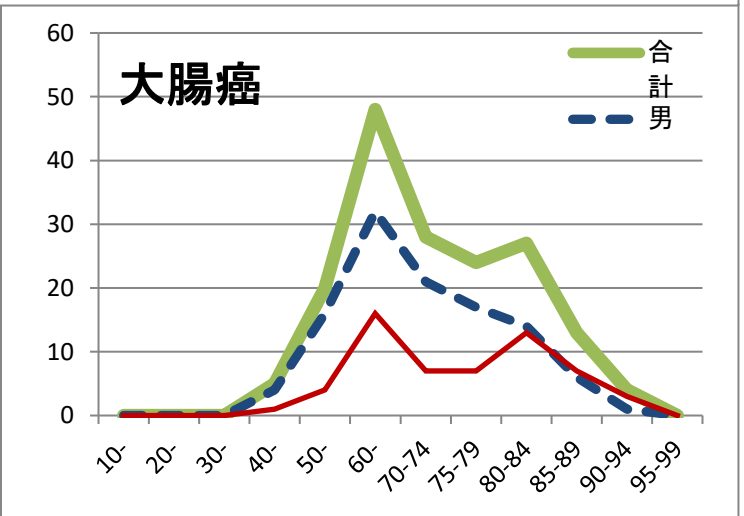
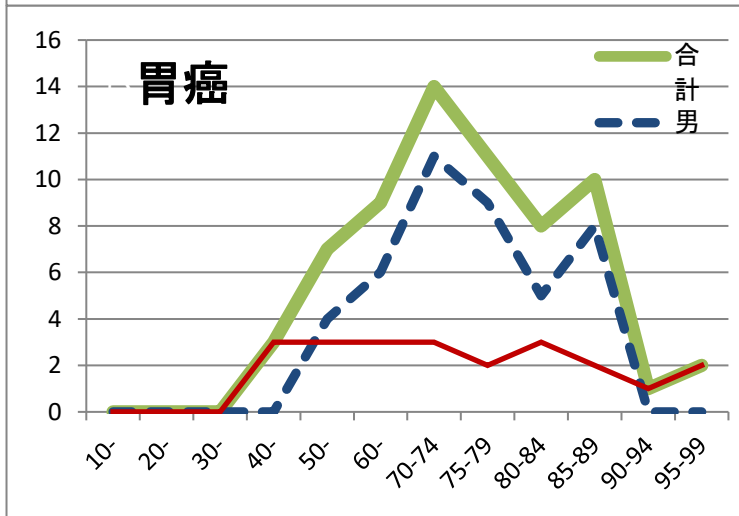
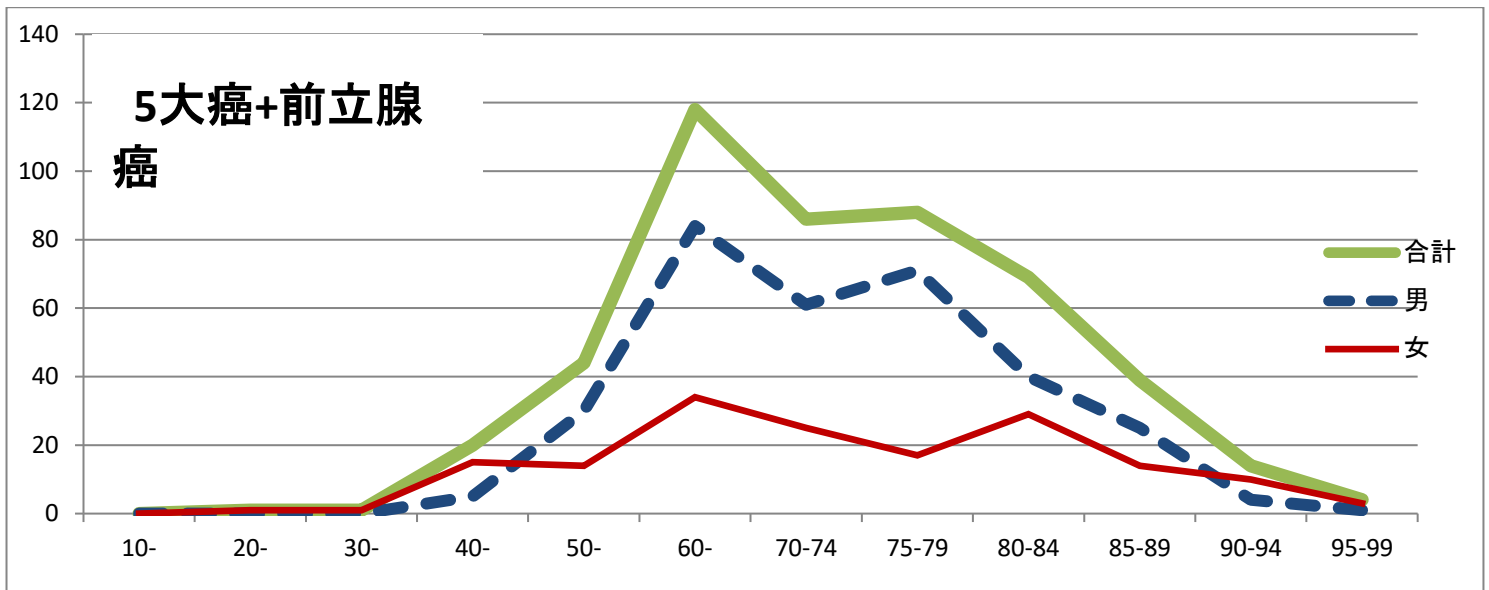


# 長崎県島原病院 2012年

## 部位別集計 (638件)





性別集計表  
抽出条件：2012年診断抽出条件

		胃癌	大腸癌	肝臓癌	肺癌	乳癌	前立腺癌	その他	合計
男	10-	0	0	0	0	0	0	0	0
	20-	0	0	0	0	0	0	0	0
	30-	0	0	0	0	0	0	0	0
	40-	0	4	0	1	0	0	0	5
	50-	4	16	2	3	0	5	0	30
	60-	6	32	1	19	0	26	0	84
	70-74	11	21	1	9	0	19	0	61
	75-79	9	17	2	10	0	33	0	71
	80-84	5	14	0	7	0	14	0	40
	85-89	8	6	0	6	0	5	0	25
	90-94	0	1	0	2	0	1	0	4
95-99	0	0	0	0	0	1	0	1	
男合計		43	111	6	57	0	104	0	321
女	10-	0	0	0	0	0	0	0	0
	20-	0	0	0	0	1	0	0	1
	30-	0	0	0	0	1	0	0	1
	40-	3	1	0	1	10	0	0	15
	50-	3	4	1	1	5	0	0	14
	60-	3	16	1	4	10	0	0	34
	70-74	3	7	1	7	7	0	0	25
	75-79	2	7	1	5	2	0	0	17
	80-84	3	13	0	6	7	0	0	29
	85-89	2	7	2	3	0	0	0	14
	90-94	1	3	0	2	4	0	0	10
95-99	2	0	1	0	0	0	0	3	
女合計		22	58	7	29	47	0	0	163
合計	10-	0	0	0	0	0	0	0	0
	20-	0	0	0	0	1	0	0	1
	30-	0	0	0	0	1	0	0	1
	40-	3	5	0	2	10	0	0	20
	50-	7	20	3	4	5	5	0	44
	60-	9	48	2	23	10	26	0	118
	70-74	14	28	2	16	7	19	0	86
	75-79	11	24	3	15	2	33	0	88
	80-84	8	27	0	13	7	14	0	69
	85-89	10	13	2	9	0	5	0	39
	90-94	1	4	0	4	4	1	0	14
95-99	2	0	1	0	0	1	0	4	
合計		65	169	13	86	47	104	0	484