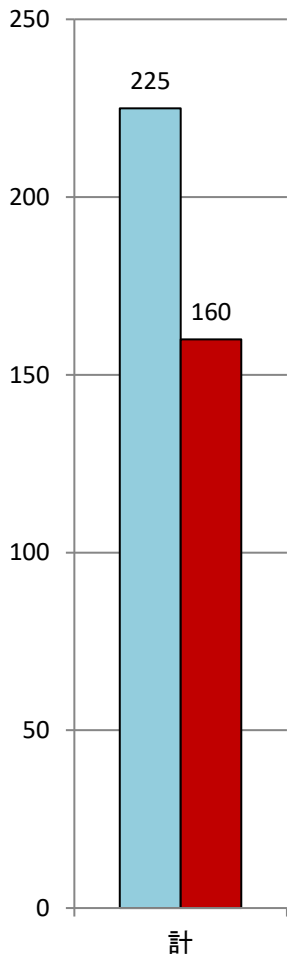
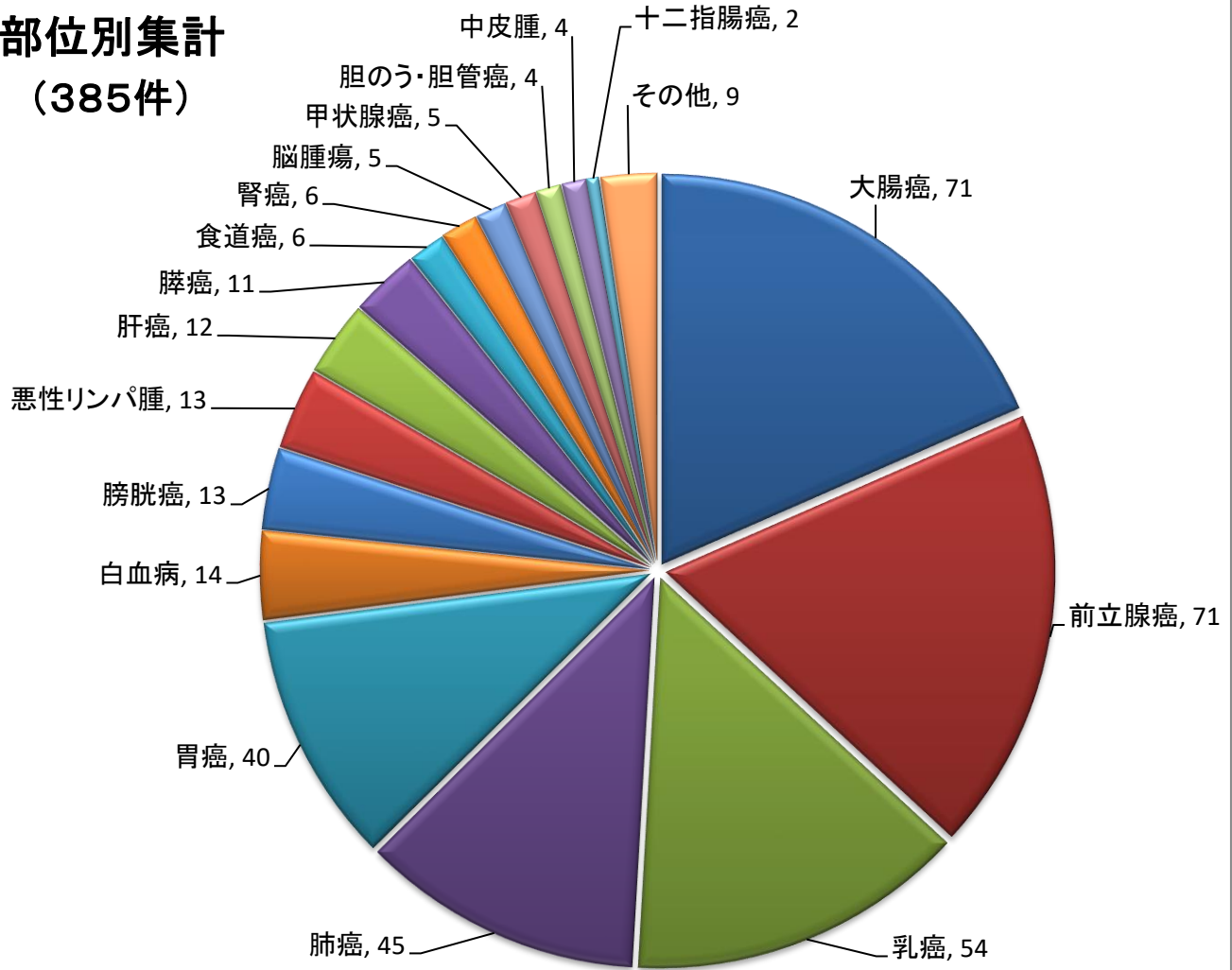
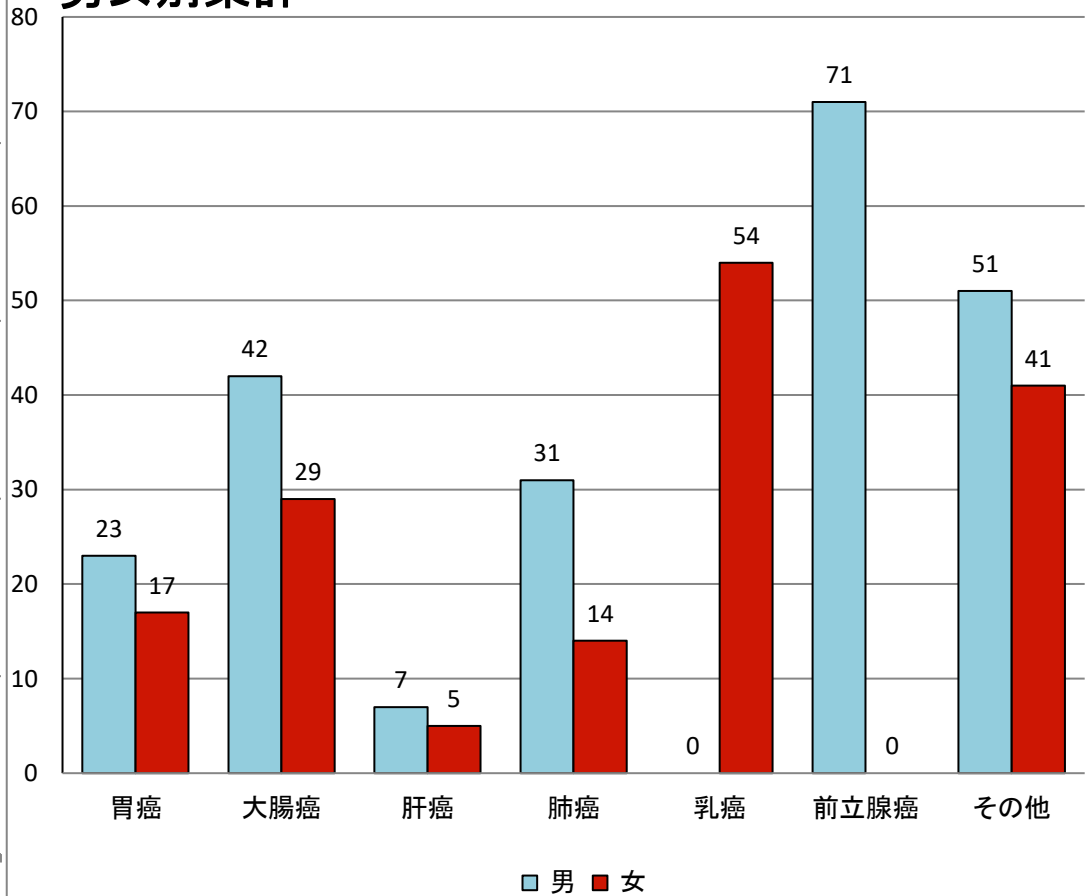


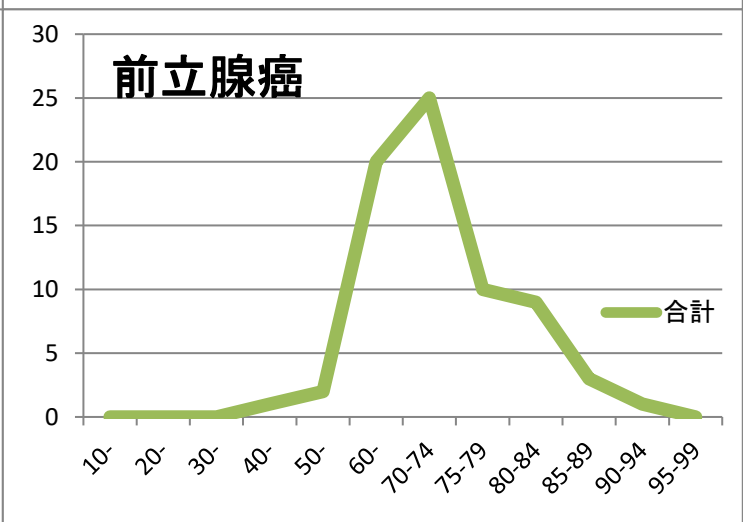
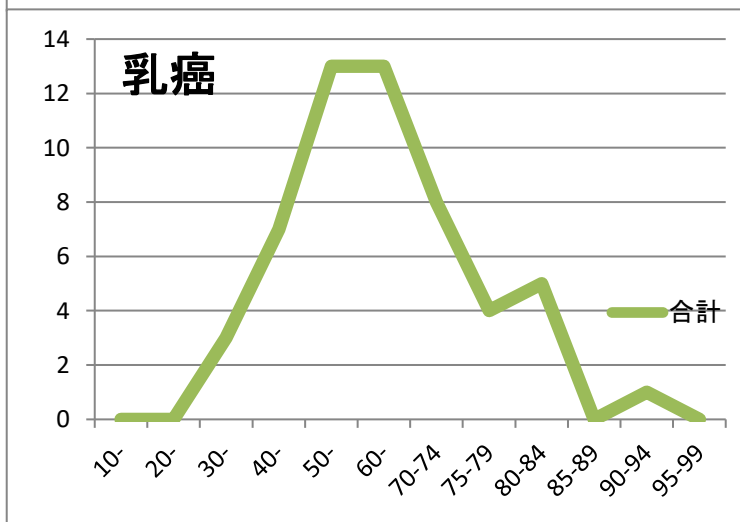
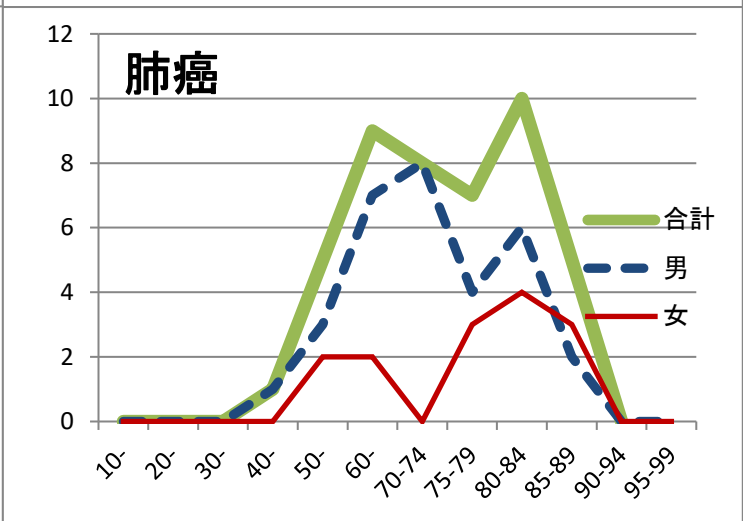
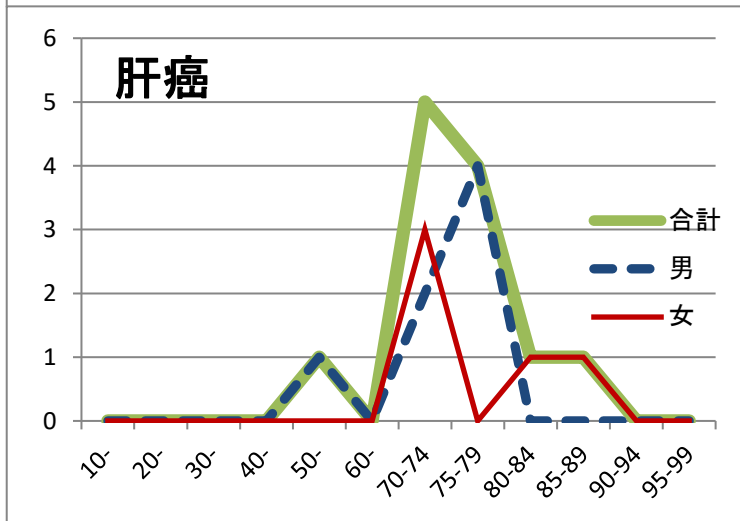
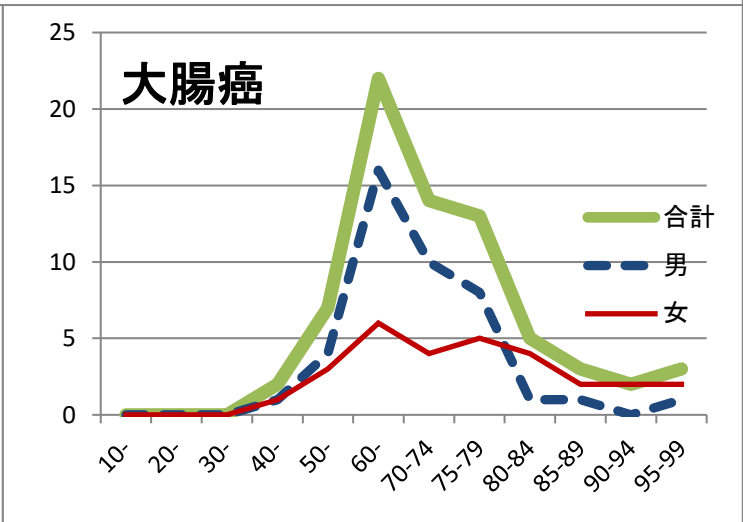
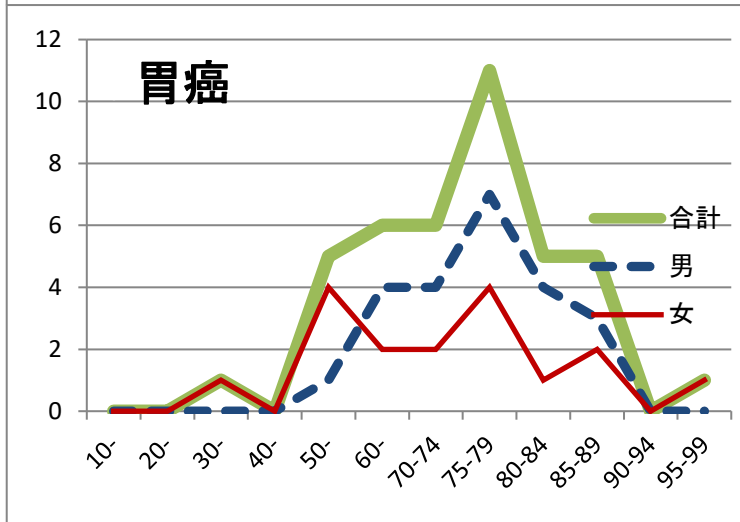
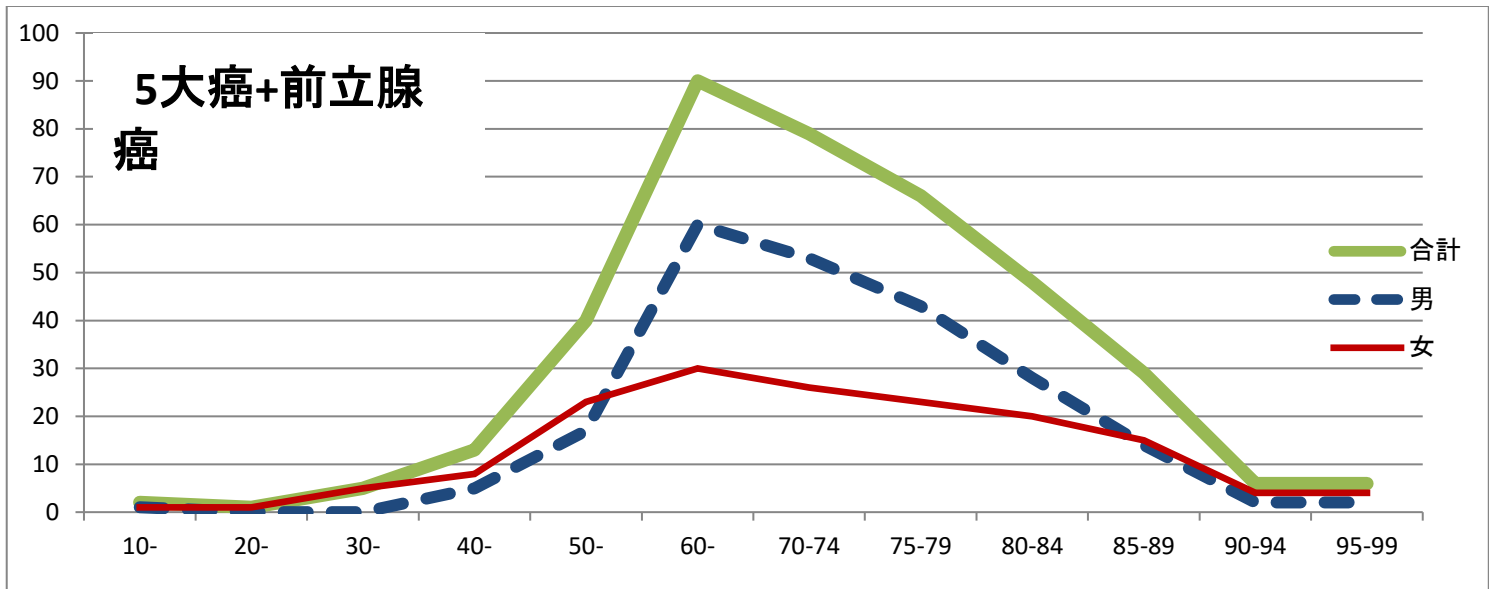
長崎県島原病院 2010年

部位別集計 (385件)



男女別集計





性別集計表
抽出条件：2010年診断抽出条件

		胃癌	大腸癌	肝臓癌	肺癌	乳癌	前立腺癌	その他	合計
男	10-	0	0	0	0	0	0	1	1
	20-	0	0	0	0	0	0	0	0
	30-	0	0	0	0	0	0	0	0
	40-	0	1	0	1	0	1	2	5
	50-	1	4	1	3	0	2	6	17
	60-	4	16	0	7	0	20	13	60
	70-74	4	10	2	8	0	25	4	53
	75-79	7	8	4	4	0	10	10	43
	80-84	4	1	0	6	0	9	8	28
	85-89	3	1	0	2	0	3	5	14
	90-94	0	0	0	0	0	1	1	2
95-99	0	1	0	0	0	0	1	2	
男合計		23	42	7	31	0	71	51	225
女	10-	0	0	0	0	0	0	1	1
	20-	0	0	0	0	0	0	1	1
	30-	1	0	0	0	3	0	1	5
	40-	0	1	0	0	7	0	0	8
	50-	4	3	0	2	13	0	1	23
	60-	2	6	0	2	13	0	7	30
	70-74	2	4	3	0	8	0	9	26
	75-79	4	5	0	3	4	0	7	23
	80-84	1	4	1	4	5	0	5	20
	85-89	2	2	1	3	0	0	7	15
	90-94	0	2	0	0	1	0	1	4
95-99	1	2	0	0	0	0	1	4	
女合計		17	29	5	14	54	0	41	160
合計	10-	0	0	0	0	0	0	2	2
	20-	0	0	0	0	0	0	1	1
	30-	1	0	0	0	3	0	1	5
	40-	0	2	0	1	7	1	2	13
	50-	5	7	1	5	13	2	7	40
	60-	6	22	0	9	13	20	20	90
	70-74	6	14	5	8	8	25	13	79
	75-79	11	13	4	7	4	10	17	66
	80-84	5	5	1	10	5	9	13	48
	85-89	5	3	1	5	0	3	12	29
	90-94	0	2	0	0	1	1	2	6
95-99	1	3	0	0	0	0	2	6	
合計		40	71	12	45	54	71	92	385